

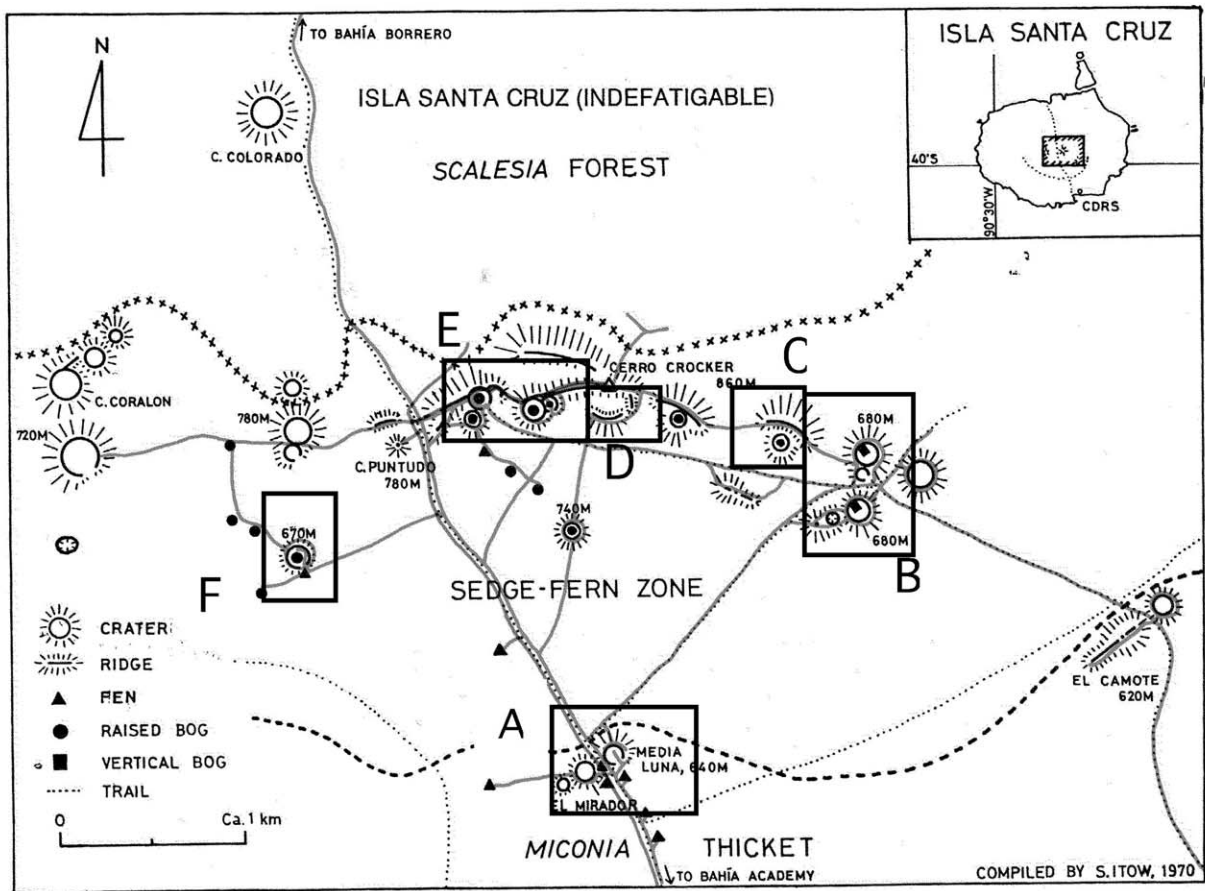


Title	Field notes of Galápagos Vegetation Studies in 1970 and 1978
Author(s)	Itow, Syuzo
Citation	Itow, S. 2009. Field notes of Galápagos vegetation studies in 1970 and 1978. NAOSITE.
Issue Date	2009-06
URL	http://hdl.handle.net/10069/21987
Right	© 2009 Nagasaki University Library

This document is downloaded at: 2012-05-17T03:56:46Z

3. SANTA CRUZ HIGHLANDS

Fern-sedge vegetation
Vertical bog formations
Raised bog formations



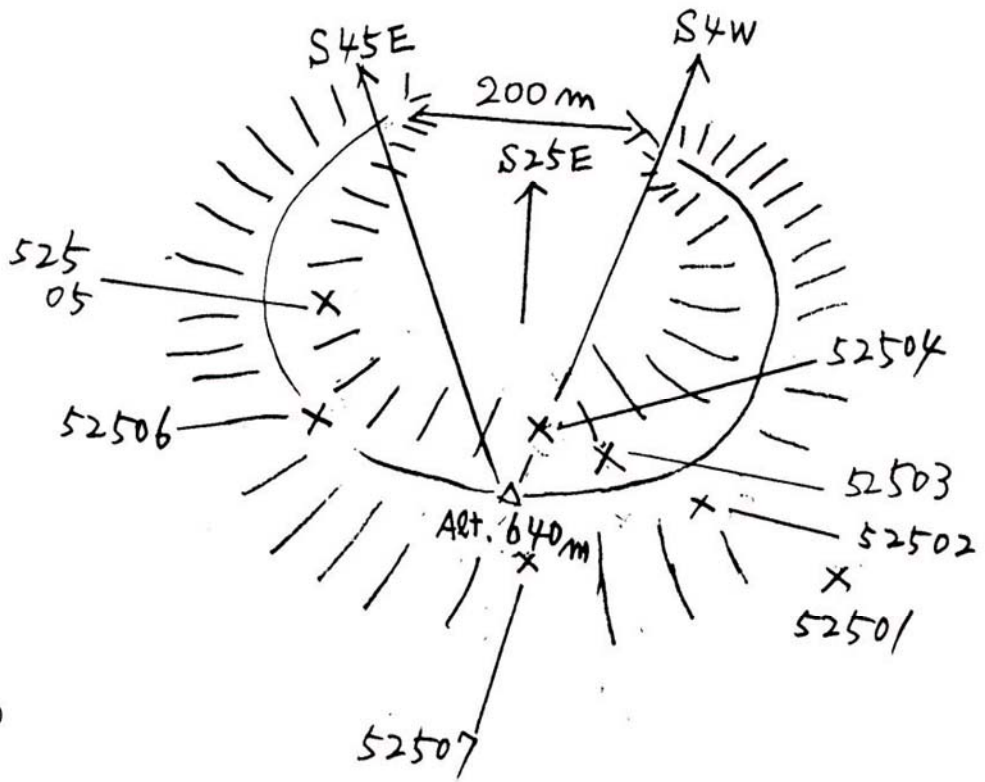
Species compositions of the Fern-Sedge vegetation have been already published in Tables 1-5 in S. Itow (1990). Here Table 3.1 below and sketches give the pinpoint sites of vegetation records.

Table 3.1 List of vegetation records at Loc. A-D in the Santa Cruz highland..

Location	Record no.	Stand no.
A : Cerro Media Luna	52502	Tab. 2-17
	52503	Tab. 3-14
	52504	Tab. 3-9
	52505	Tab. 3-15
	52506	Tab. 2-12
	52507	Tab. 2-19
B : Cerro Calzoncillo	40401	Tab. 5-19
	40402	Tab. 2-3
	40405	Tab. 3-8
	40407	Tab. 1-1
	40410	Tab. 4-1
C : Small crater	52609	Tab. 2-8
	52610	Tab. 1-13
	52612	Tab. 2-18
	52613	Tab. 1-12
D : Righes west of Cerro Crcoker	43001	Tab. 5-3
	43002	Tab. 5-4
	43003	Tab. 5-5
	43004	Tab. 5-2
	43005	Tab. 5-1
	43006	Tab. 5-6
	43007	Tab. 5-7
	43010	Tab. 3-7

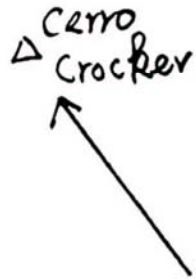
Location A : Cerro Media Luna

P. 469'

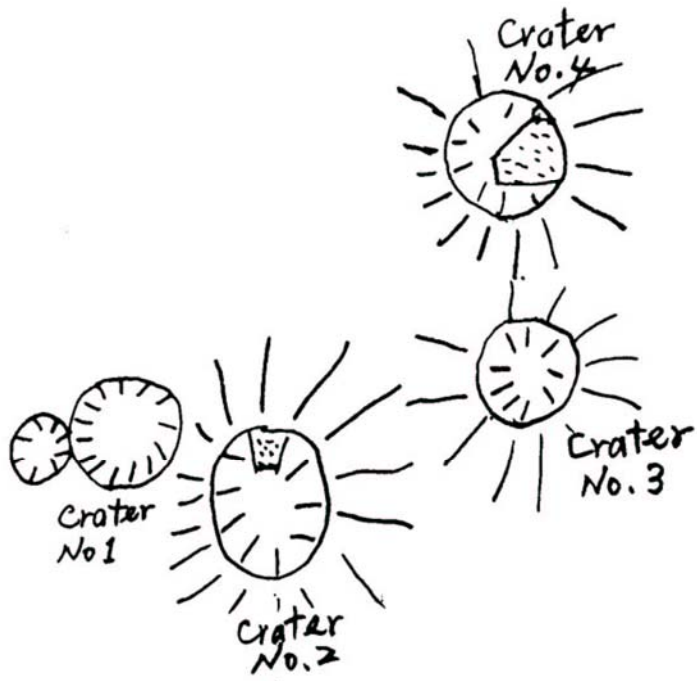


S. Itow 1970

Location B : Cerros Calzoncillo



P. 260

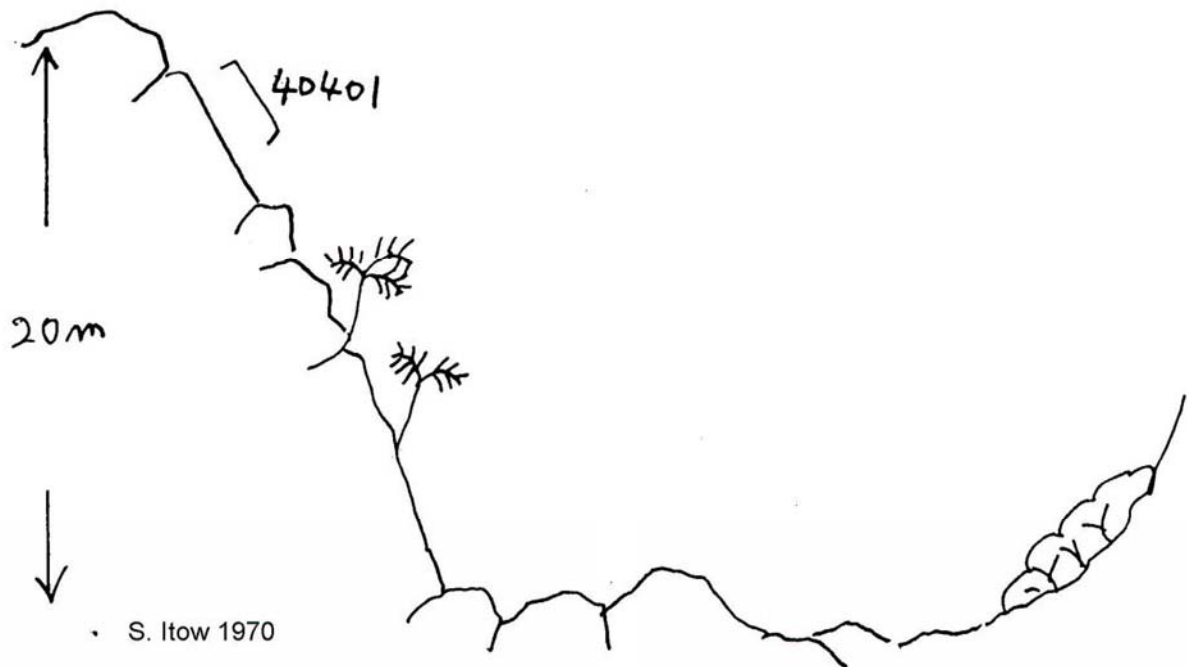


CRATERS "CALZONCILLO"

S. Itow 1970

Location B :

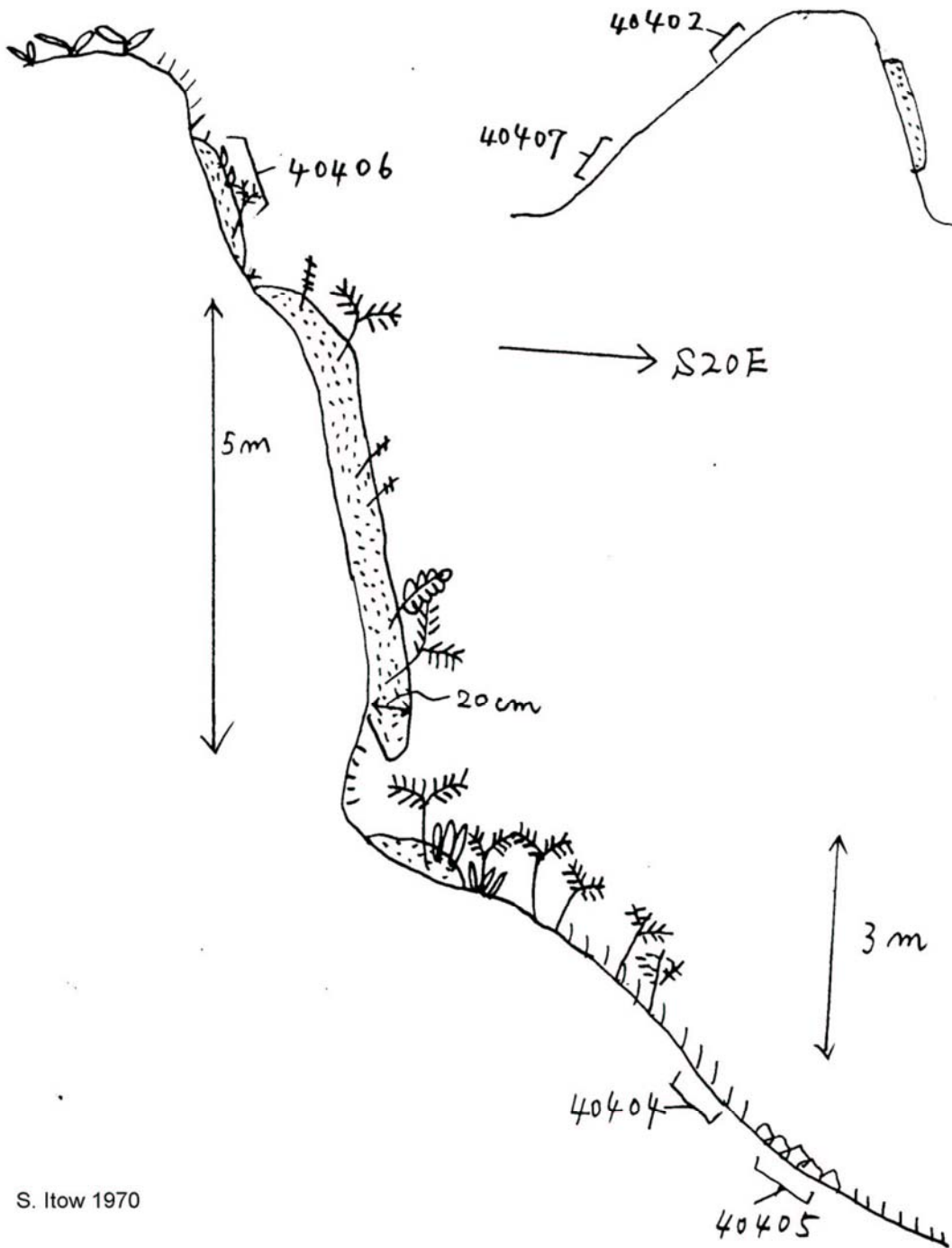
P. 262
Crater No. 1



Location B : Cerros Calzoncillo

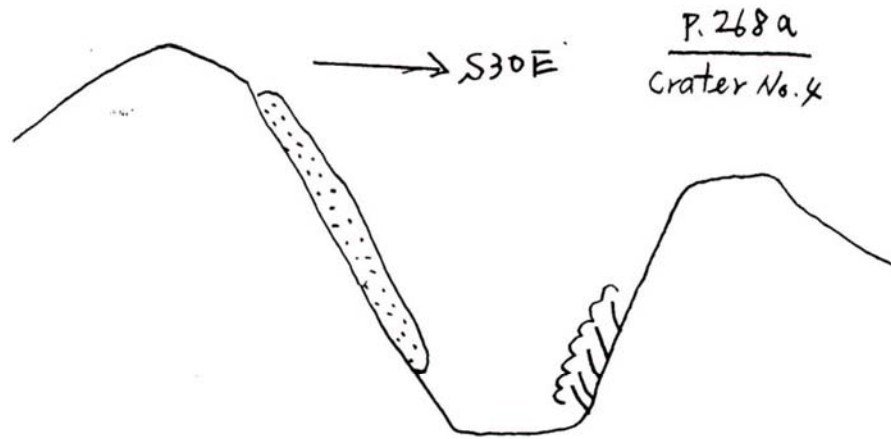
P.264 Crater No. 2

Alt. 680m

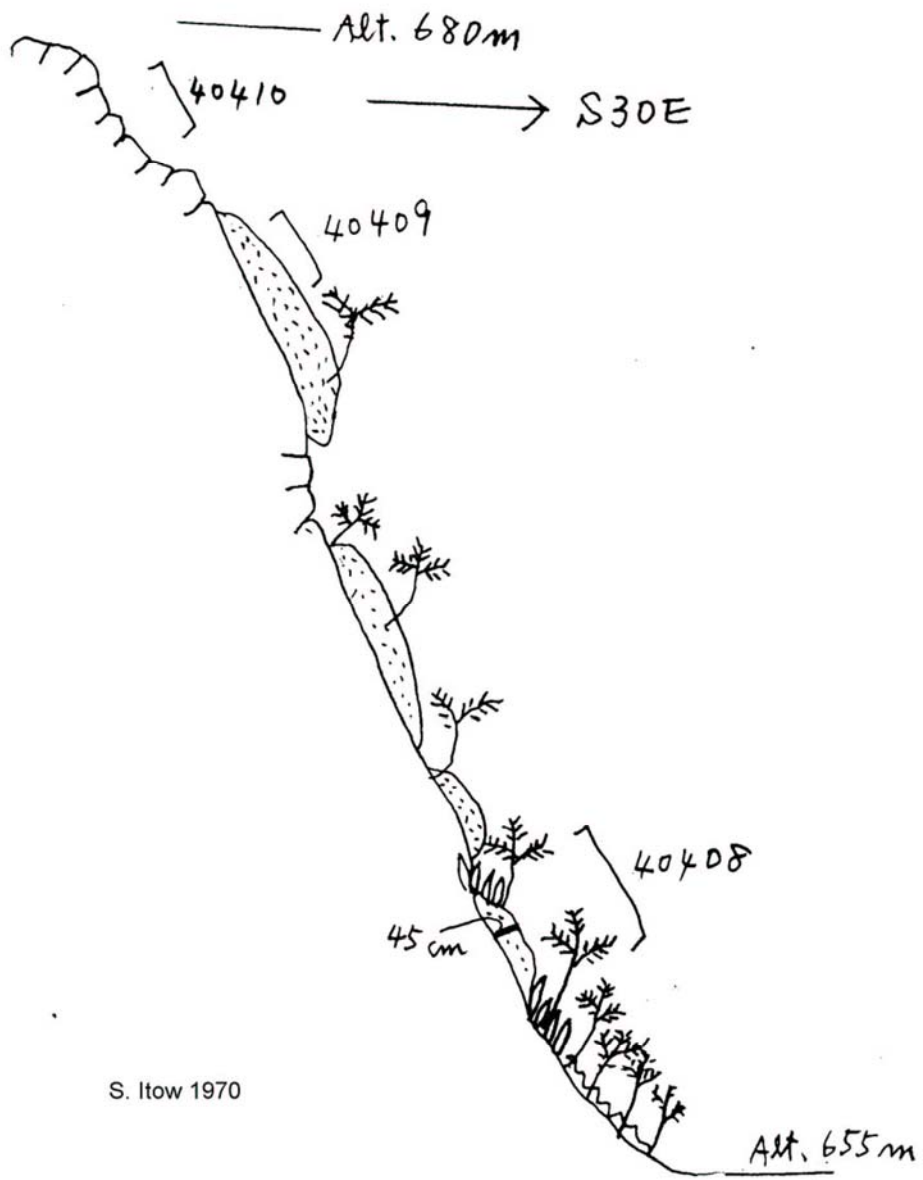


S. Itow 1970

Location B:



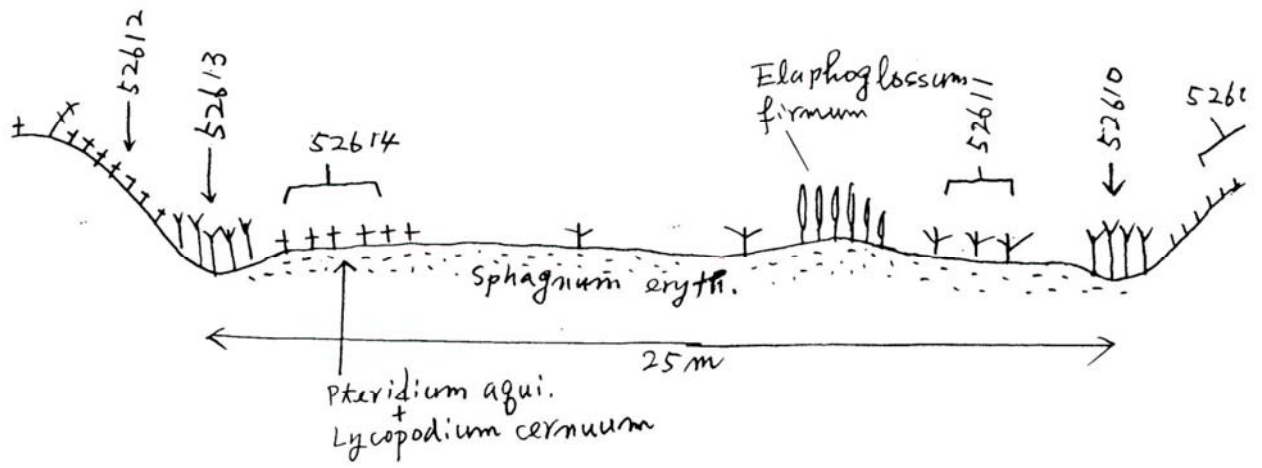
P. 268 Crater No. 4



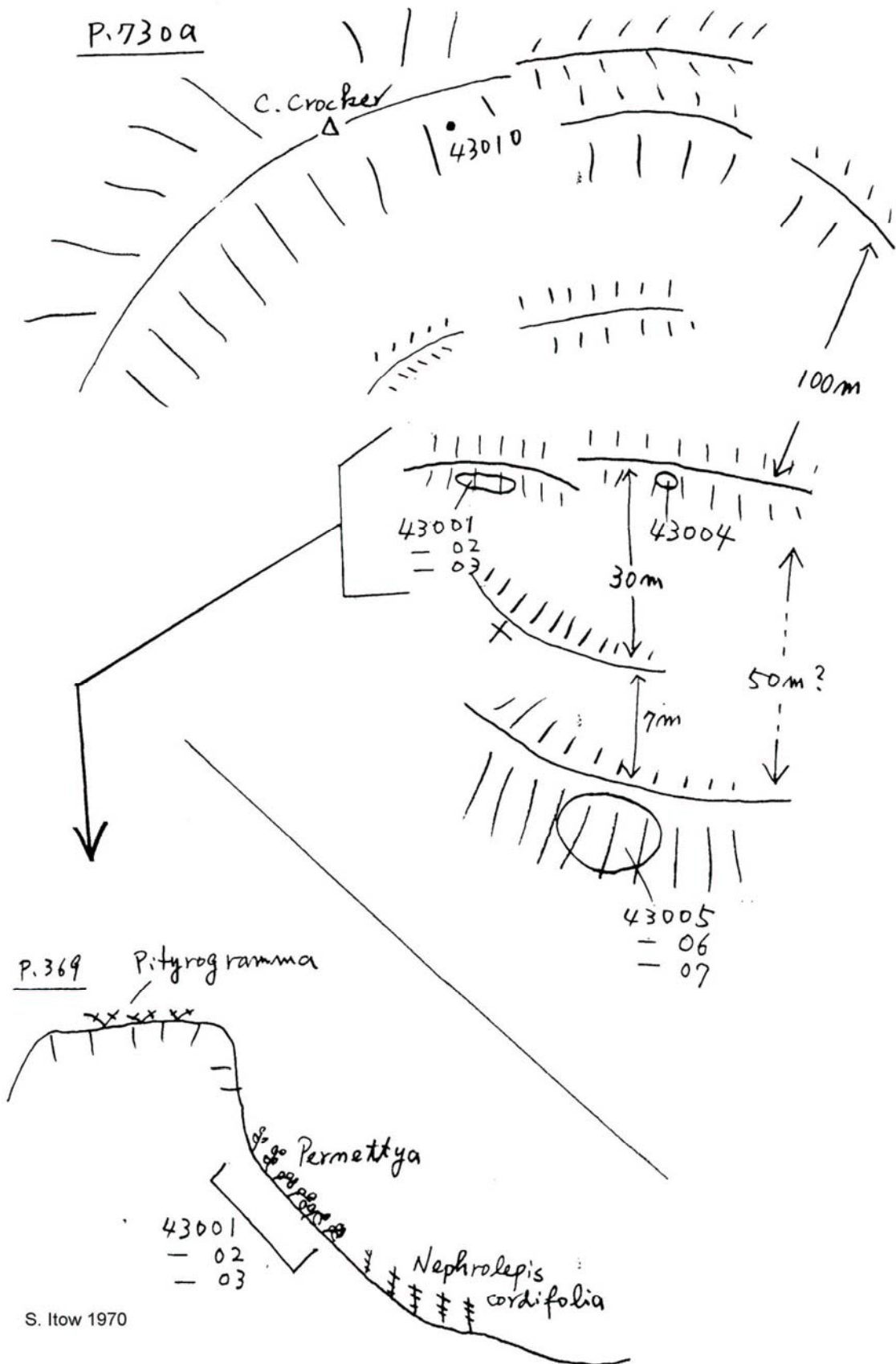
S. Itow 1970

Location C : Raised bog 1.

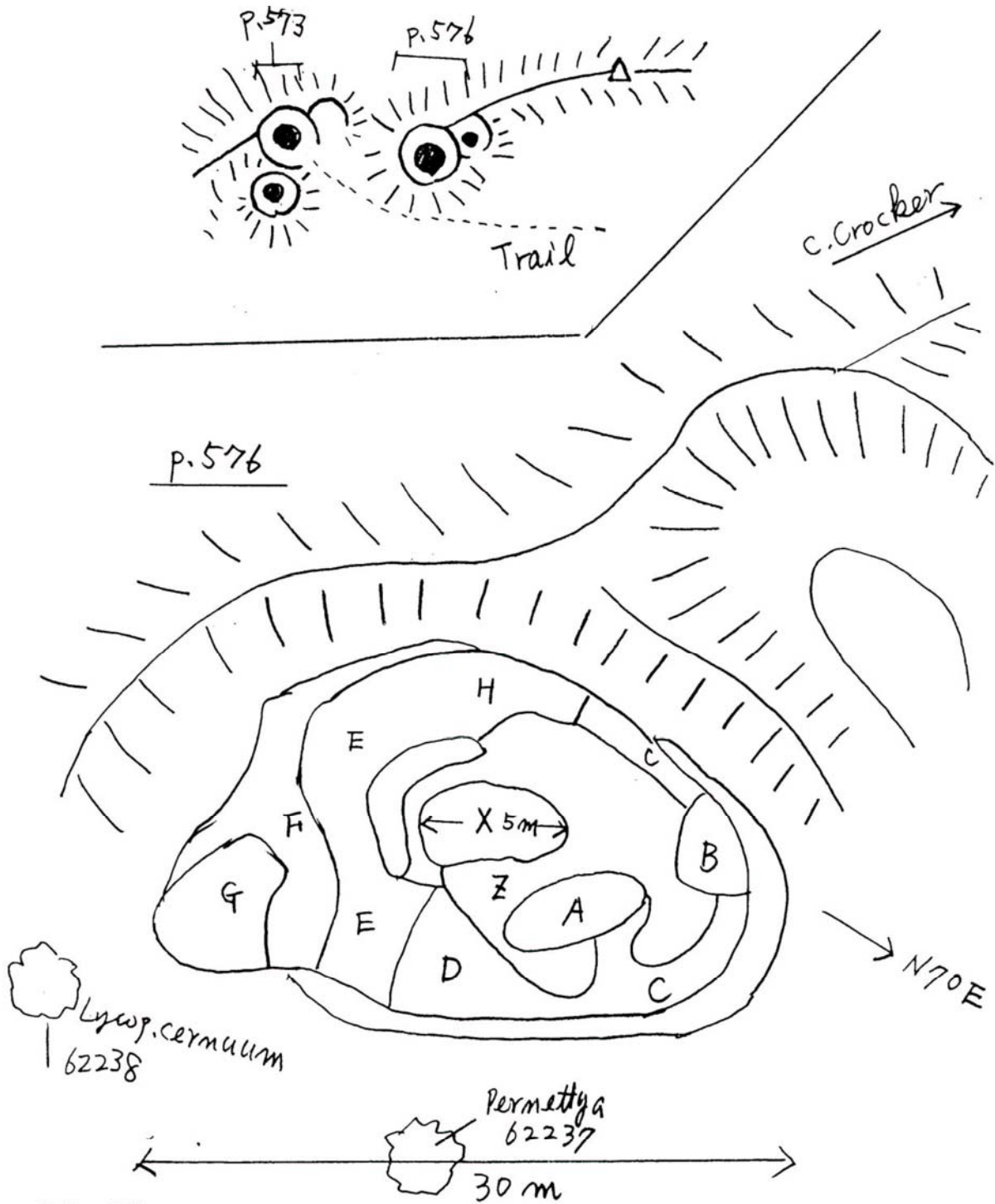
'a



Location D :

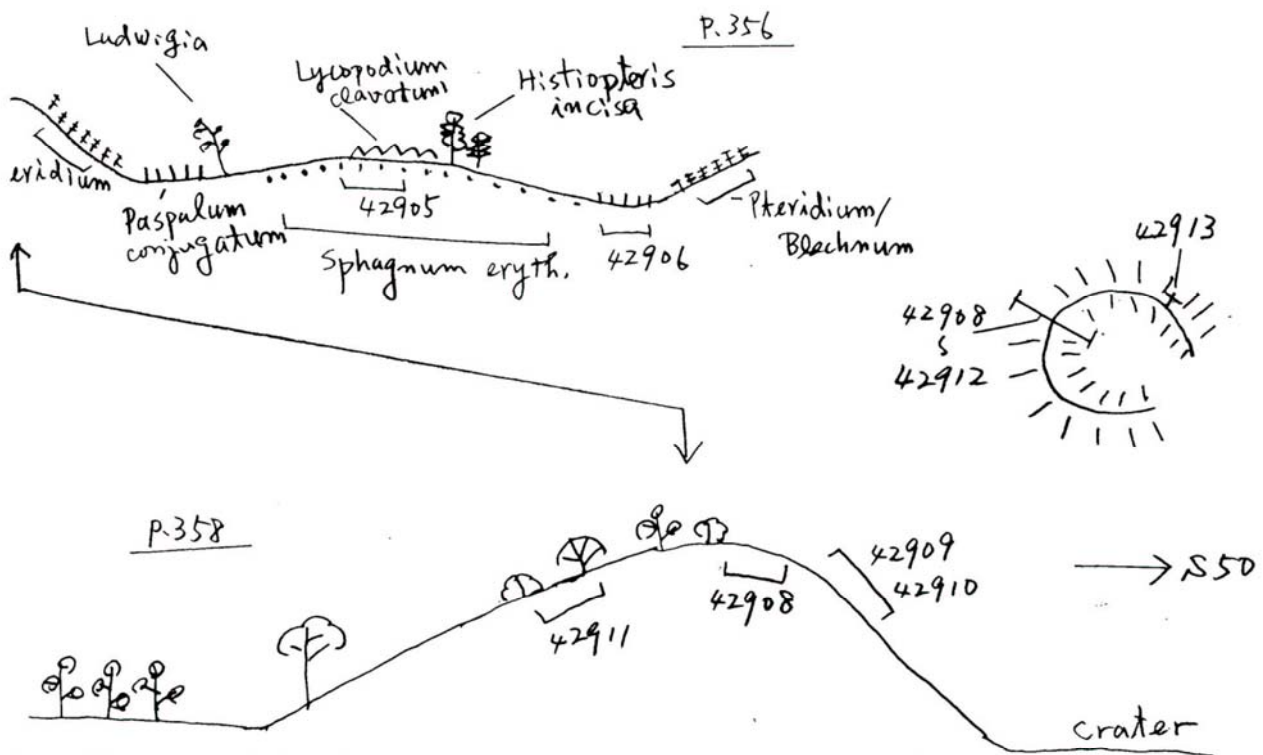


Location E :



S. Itow 1970

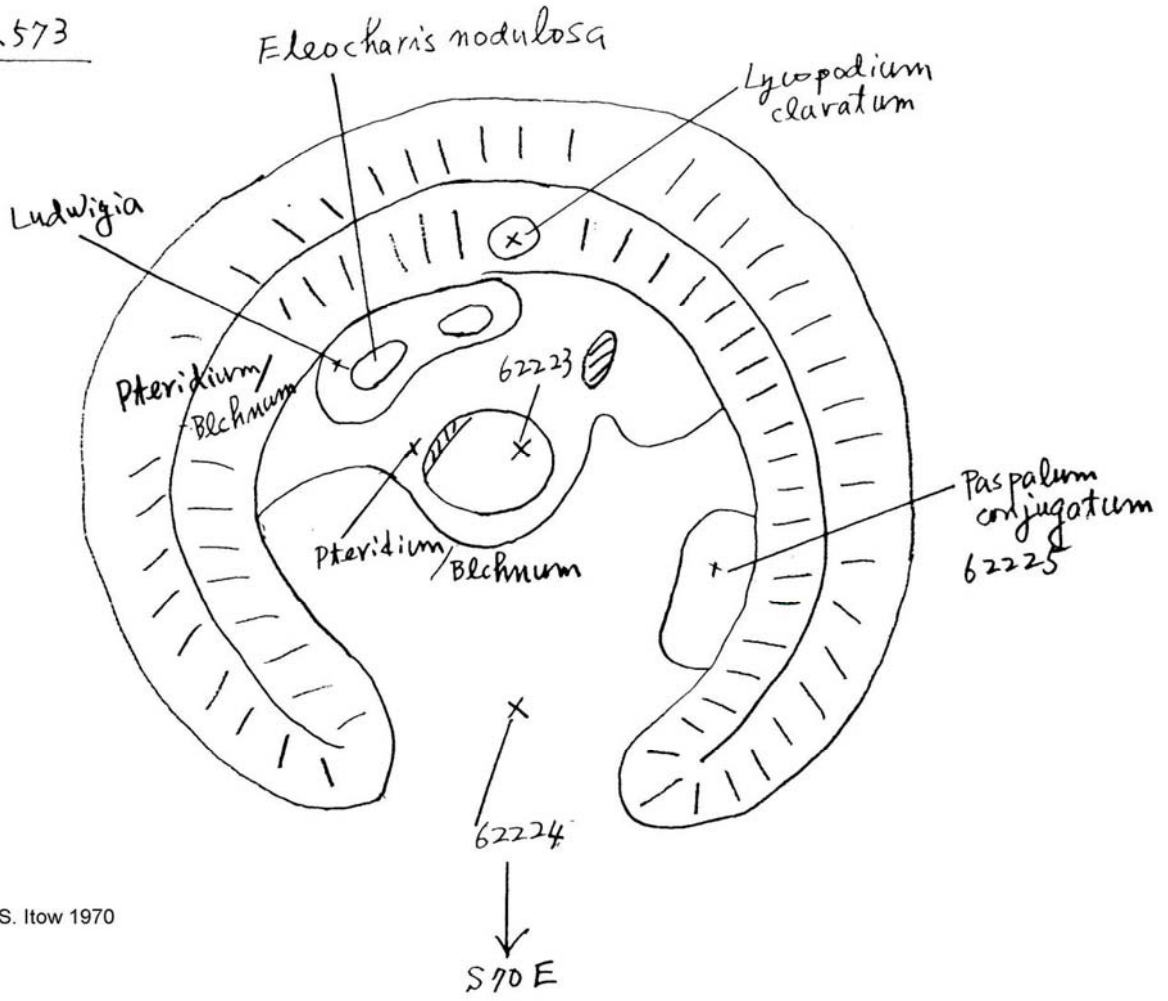
Location F :



Itow 1970

Location F :

P.573



S. Itow 1970

Table 3.2 Vertical bogs at Cerro Calzoncillo (Loc. B), Isla Santa Cruz, and Cerro San Joaquin, Isla San Cristobal.

Running No.	V01	V02	V03	V04
Field-note page	266	269	270	529
Date	404	404	404	604
Record no.	06	08	09	12
Location	B	B	B	SC*
Altitude (m)	680	670	680	670
Slope aspect	S20E	S30E	S30E	S55E
Slope steepness	50	70	50	60
<i>Sphagnum erythrocalyx</i>	1.2	<u>5.4</u>	5.5	<u>5.4</u>
<i>Nephrolepis cordifolia</i>	3.4	1.2	2.2	+
<i>Cyathea weatherbyana</i>	2.3	3.3	+ .2	+
<i>Pernettya howellii</i>	2.2	+	<u>2.2</u>	.
<i>Elaphoglossum firmum</i>	+ .2	3.3	1.2	.
<i>Lycopodium clavatum</i>	.	4.4	2.3	<u>+</u>
<i>Hypericum uliginosum</i>	1.2	.	1.2	.
<i>Phyllanthus carolinensis</i>	+	.	+	.
<i>Thelypteris fistulosa</i>	.	+ .2	.	<u>+</u>
<i>Blechnum polypodioides</i>	.	.	+	<u>+</u>
Lichens	3.3	.	.	.
Liverworts	+	.	.	.
<i>Commelina diffusa</i>	.	+	.	.
<i>Asplenium feei</i>	.	+	.	.
<i>Histiopteris incisa</i>	.	+	.	.
<i>Pteridium aquilinum</i>	.	.	+	.
<i>Borreia laevis</i>	.	.	<u>1.2</u>	.
<i>Jaegeria gracilis</i>	.	.	+ .2	.
<i>Dicranopteris flexuosa</i>	.	.	+	.
<i>Polypodium aureum</i>	.	.	+	.
<i>Ctenitis pleiosorus</i>	.	.	.	<u>+</u>
<i>Asplenium serra</i>	.	.	.	<u>+</u>
<i>Hypolepis hostilis</i>	.	.	.	<u>+</u>
<i>Elaphoglossum tenuicaulum</i>	.	.	.	<u>+</u>

Voucher specimens underlined.

*Cerro San Joaqui, San Cristobal.

Table 3.3 Raised bogs at Location C, Isla Santa Cruz. May 26, 1970.

Running No.	R03	R04
Field-note page	480	481
Date	526	526
Record no.	11	14
Location	C	C
Altitude (m)	680	680
Slope aspect	Flat	Flat
Slope degree	-	-
<i>Sphagnum erythrocalyx</i>	5.5	5.5
<i>Nephrolepis cordifolia</i>	1.2	1.2
<i>Elaphoglossum firmum</i>	+	.
<i>Pteridium aquilinum</i>	.	1.2

Table 3.4 Raised bogs west of Cerro Crocker (Loc. E), Isla Santa Cruz. June 22, 1970.

Running No.	R13	R14	R15	R16	R17	R18	R19	R20	R21	R22	R23
Field-note page	576	577	577	577	577	577	577	577	577	578	580
Date	622	622	622	622	622	622	622	622	622	622	623
Record no.	28	32	33	34	35	36	29	30	37	38	02
Location	E-X	E-D	E-E	E-F	E-G	E-H	E-A	E-B	E	E	E
Altitude (m)	780	780	780	780	780	780	780	780	780	780	780
Slope aspect	Flat	Flat	Flat	Flat	Flat	Flat	Flat	Flat	Flat	Flat	Flat
Slope degree	-	-	-	-	-	-	-	-	-	-	-
<i>Sphagnum erythrocalyx</i>	5.5	5.5	5.5	5.5	5.5	5.5	5.5	5.4	5.5	5.5	5.5
<i>Nephrolepis cordifolia</i>	1.2	.	2.2	1.1	2.3	1.1	1.1	1.1	1.1	1.1	2.2
<i>Pteridium aquilinum</i>	.	.	1.2	2.2	3.3	1.2	.	.	1.1	1.2	+
<i>Pernettya howellii</i>	.	.	1.2	.	.	+2	3.2	.	3.3	.	+2
<i>Eleocharis fistulosa</i>	.	3.2	1.1	+	+
<i>Lycopodium cernuum</i>	.	.	2.1	1.2	.	.	.	3.2	.	2.2	.
<i>Lycopodium clavatum</i>	.	2.3	.	.	.	1.2	+2
<i>Elaphoglossum firmum</i>	3.3	2.2
<i>Histiopteris incisa</i>	.	.	.	4.4	+
<i>Blechnum polypodioides</i>	1.2
<i>Dicranopteros flexuosa</i>	3.2
<i>Eleocharis nodulosa</i>	1.1
<i>Ludwigia leptocarpa</i>	3.2	.	.	.

* Pinpoint location of the records 62267, 62238 and 62302 are unknown.

Voucher specimens underlined.

Table 3.5 Raised bogs southwest of Cerro Puntudo (Loc. F), Isla Santa Cruz. April 29 and June 22, 1970.

Running No.	R01	R10	R11	R12	R13	F06
Field-note page	356	572	572	572	573	574
Date	429	622	622	622	622	622
Record no.	05	20	21	22	23	25
Location	F	F	F	F	F	F
Altitude (m)	690	660	660	660	660	660
Slope aspect	Flat	Flat	Flat	Flat	Flat	Flat
Slope degree	-	-	-	-	-	-
<i>Sphagnum erythrocalyx</i>	5.5	3.4	5.5	5.5	5.5	.
<i>Nephrolepis cordifolia</i>	1.2	.	2.2	3.2	2.2	.
<i>Lycopodium clavatum</i>	+2	.	1.2	.	.	.
<i>Papalum conjugatum</i>	.	5.5	.	.	.	5.5
<i>Dicranopteros flexuosa</i>	.	.	4.4	.	3.4	.
<i>Eleocharis nodulosa</i>	.	.	+2	.	.	1.2
<i>Histiopteris incisa</i>	+
<i>Hibiscus diversifolius</i>	.	.	2.2	.	.	.
<i>Commerina diffusa</i>	.	.	+	.	.	.
<i>Pteridium aquilinum</i>	2.2	.
<i>Lycopodium cernuum</i>	2.1	.
<i>Ludwigia leptocarpa</i>	1.2
<i>Polygonum opelousanum</i>	1.2
<i>Centella asiatica</i>	2.3
<i>Sphagnum cuspidatum</i>	1.2
<i>Vigna luteola</i>	+

*Pinpoint locations of the records are not clear but inside of the crater.

Voucher specimens underlined.